

Mountain Times

The Friends of Rib Mountain State Park
4200 Park Road, Wausau, Wisconsin 54401

Vol. 7 Issue 1

Winter 2008

From the President

This will be my last report to the membership as president of the Friends of Rib Mountain. With 12 years on the Board and eight years as President, I felt that it was time for someone else to take the helm and I chose not to run for reelection to the Board of Directors. A new president will be elected at the January 14 Board meeting. As past-president, I will hold an ex-officio position on the Board and plan to remain active in the Friends and continue to work with the nature center master plan project.

I would like to take this opportunity to welcome **Russ Graveen** aboard as our newest Friends board member. Russ is a Rib Mountain resident and works for Marathon County. His knowledge of the area will be a great asset to the board.

Happy Hiking,

Steve Engler, President

president@ribmountain.org, 715-298-7933

2008 Snowshoe Hikes

Saturday, January 12, 11AM – 2PM

Saturday, January 26, 6 PM – 8PM

People who have never tried snowshoeing sometimes feel a bit uncomfortable being out at night and have asked for a daytime hike. In order to expand our event to some new people, the January 12 hike will be a day hike from 11 a.m. – 2 p.m. Joel Bratz will be providing snowshoe rental.

The **candlelight** snowshoe will be January 26 from 6 p.m. – 8 p.m. and again Joel will provide rental.

We will be using the concession stand as a warming house and are planning a campfire and some milk house heaters to take a little bit of the chill out of the building. Just a reminder, the concession stand is the small round building near the gazebo.

If anyone has a big kerosene type heater to share, please let us know, that would help also.

Volunteers are always needed to help lay out the trail and be available to help with the event. We will have warm beverages available and if anyone would be able to bake some cookies it would be a great addition to the event.

For information or to volunteer to help, please contact **Nancy Stencil** at 359-9166.

Board Meeting set for January 14

The next meeting of the Board of directors is scheduled for 7 PM on Monday, January 14 2008. The meeting will be held in the conference room at the DNR service center at the intersection of Highways N and R, at the bottom of Park Road. Members are always welcome to attend board meetings. If you plan to attend, use the employee entrance at the back of the building.

Board of Directors

Steve Engler	President	
Gene Musolf	Vice President	
Scott Wegner	Treasurer	
Sheryl Hemp	Secretary	
Directors: Sandi Cihlar	Wes Ebert	Ray Heiser
Greg Huber	Wib Johnson	Kevin Keeffe
Bea Musolf	Nancy Stencil	Joe Wachtel

Important Volunteer Opportunity

The summer naturalist positions at Rib Mountain and most state parks are a thing of the past. However, summer programs at Rib Mountain are still important and your Friends group can help fill this need. We are in need of volunteers to plan, schedule and organizing a variety of summer naturalist programs. Responsibilities include working with DNR staff to find presenters, schedule programs, arrange publicity, and help to coordinate set-up the day of the event.

If you would be willing to volunteer to help or want more information, please contact Bill Bursaw at 842-2522 or Steve Engler 298-7933

We Need You

It's membership renewal time for 2008 - Check your address label

Please look at your mailing label to see your membership status. Many of you have taken advantage of our two-year renewal option and are paid for this year. If your label does not indicate that you are paid through 2008, please take a moment to renew your membership today. Your membership will help us to continue to support Rib Mountain State Park. If you're paid for the year, consider a donation to the Rib Mountain Fund. This fund, established as an endowment in 2001, is administered by the Community Foundation of North Central Wisconsin. The purpose of the endowment is to help meet the long-term needs of the park. Future needs might include displays and educational material for our planned nature center or funding a summer naturalist position for the park. For information on making a donation to the Rib Mountain Fund or to include the park in your estate plan, please contact the Community Foundation at 845-9555

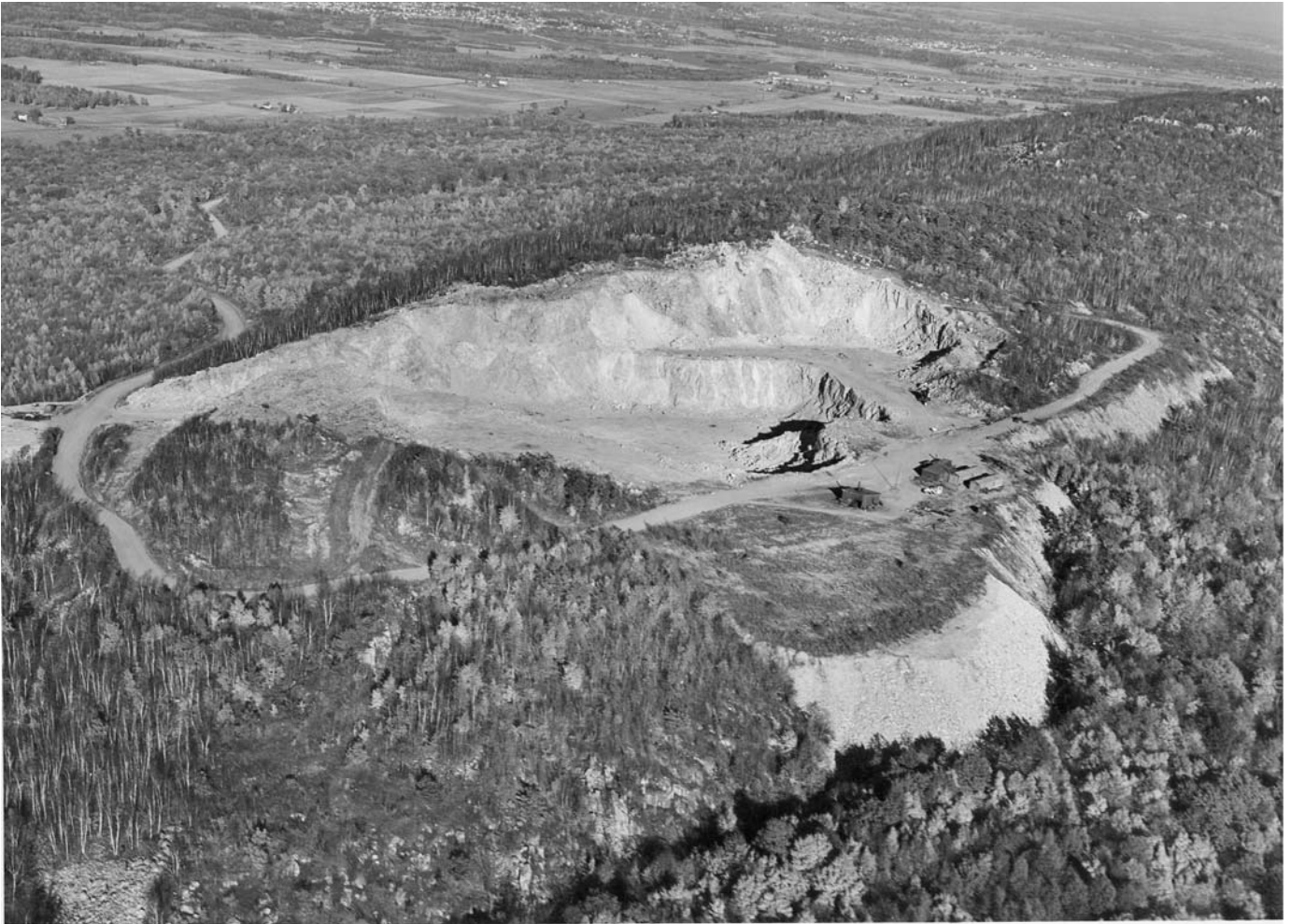
Hiking in the Park's 3M Addition

In November I had the opportunity to take my first hikes into the northwestern part of Rib Mountain. While I had wandered around the quarry on many occasions, I had never explored the lower areas of the land obtained from 3M Corporation. From the gate on the south end of Grouse Lane, it is an easy walk up the old quarry road. Nature is slowly reclaiming the road as it takes you pass an old dynamite shack and up to the mouth of the quarry. From there you can go into the bottom of the quarry or continue to follow the road around and end up at the top of the pit. From there you have a great view to the west and can look down into the quarry and see the "rock art" created by people who have visited the site after the quarry operation stopped over 30 years ago.

In addition to the quarry road, there are a number of other old roads that make good trails for exploring the area. One old road that heads due south of the Grouse Lane gate leads to an area where several old stone foundations and pits have been found. It is speculated that these could have been the foundations from the homes and barns of early property owners who may have raised sheep, logged, quarried, or even dug for gold.

This area is underutilized by park visitors and the new park master plan has included plans to develop trails in this area. The Friends are interested in helping the DNR move forward on this part of the park plan. We have applied for Stewardship Grant money to convert about three miles of these old roads into marked trails and to connect them with the existing trails at the top of the mountain. I think this will be a great addition for hiking and snowshoeing opportunities at the park.

Steve Engler



**Friends of Rib Mountain State Park
4200 Park Road
Wausau, WI 54401**